

# ESKİŞEHİR KEY FIGURES



Eskişehir Sanayi Odası

Eskişehir Sanayi Odası



[www.bebka.org.tr](http://www.bebka.org.tr)

**BEBKA © February 2017**

All rights reserved. This publication or any portion thereof may not be reproduced or used in any manner whatsoever without the express written permission.

**Prepared By: M. Buğra KANMAZ**

**Contributors: Jülide ALAN, Emine ARSLAN PAULI**

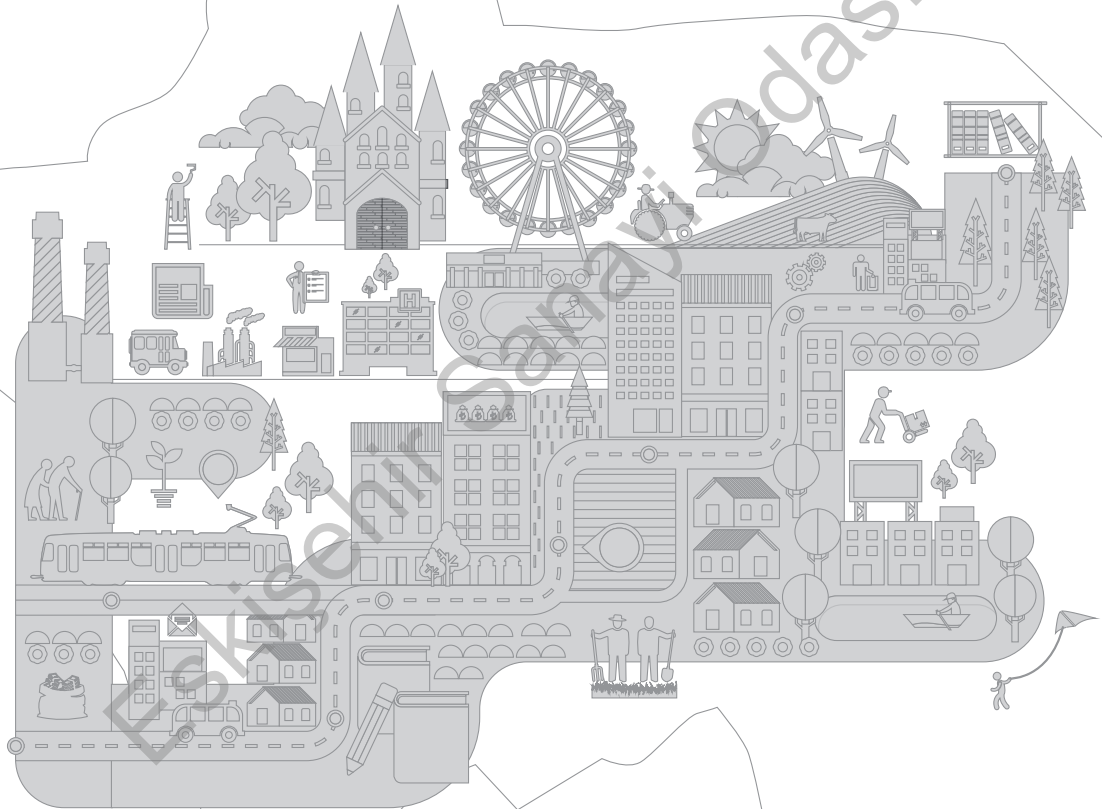
Altınova Mah. İstanbul Cad. 424/4 Buttim  
Plaza Kat 6 16250 Osmangazi/Bursa TURKEY

---

**Phone** 0224 211 13 27 • **Fax** 0224 211 13 29



# ESKİŞEHİR KEY FIGURES



# PREFACE

Producing policies that will shape the development is possible, as the first priority, by stating the socio-economic picture of the countries/regions in both quantitative and qualitative way. The importance of the dissemination where statistics and indicators are intensively used is increasing more and more so as to follow the developments in time and provide comparisons.

Nowadays, facilitating the comprehension and disseminating of the correct usage of the information is of great importance. In this vein, with “Eskisehir Key Figures” publication Bursa Eskisehir Bilecik Development Agency (BEBKA) aims to present summarized indicators and statistics describing Eskisehir in more understandable and easily trackable way.

By this work, BEBKA has targeted to make people in Eskisehir to be more acquainted with the province including its inner dynamics and to provide comparison of Eskisehir on Turkey scale. We hope that such new work for Eskisehir will be beneficial to all users.

**Bursa Eskisehir Bilecik Development Agency**

## ESKİSEHİR KEY FIGURES

01

GEOGRAPHY

08

02

POPULATION

10

03

DEMOGRAPHY

12

04

EDUCATION

18

05

HEALTH

20

06

FOREIGN  
TRADE

22

07

BANKING

24

08

EMPLOYMENT AND  
LABOR FORCE

26

09

R&D AND  
INNOVATION

28

10

ENVIRONMENT

30

11

AGRICULTURE

32

12

ENERGY

34

13

TRANSPORTATION

36

14

COMMUNICATION

38

15

CULTURE

40

16

TOURISM

42

17

SPORTS

44

18

CIVIC  
ENGAGEMENT

46

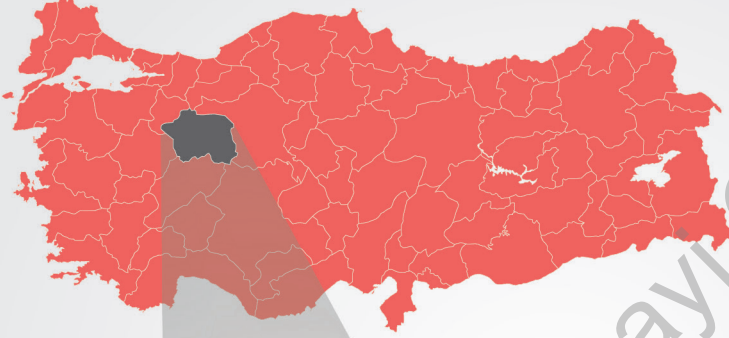
ESKİSEHİR

KEY FIGURES

2015

## 1. GEOGRAPHY

### TURKEY



Located in the north-west of the Central Anatolia Region, Eskisehir is surrounded by Bolu from the north, Ankara from the east, Konya and Afyon from the south and Kutahya and Bilecik from the west.



By means of area, Eskisehir is covering 1.8% of the Turkey's total area (excluding lakes). It is the 16th biggest province in terms of area.

ESKISEHIR

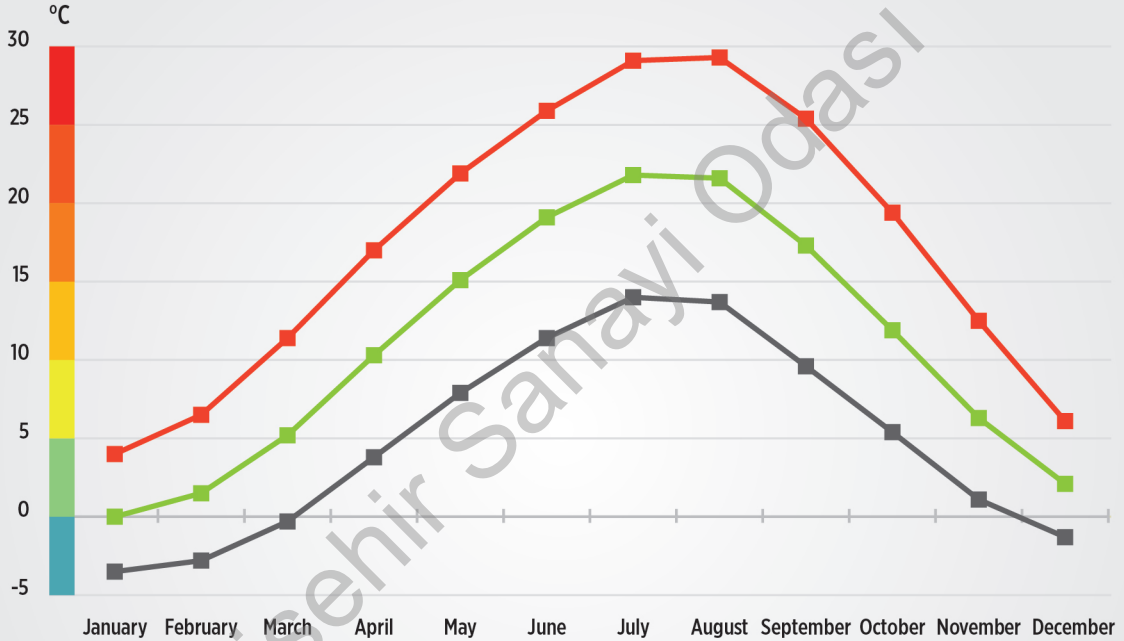
KEY FIGURES

2015

Kaynak: TÜİK

## 1. GEOGRAPHY

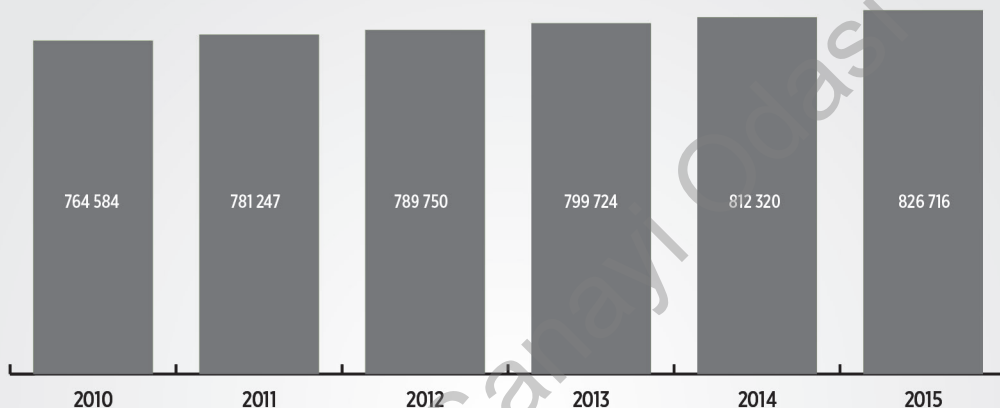
### AVERAGE MINIMUM AND MAXIMUM TEMPERATURE (1950-2015)



Between the years 1950-2015, the average minimum temperature occurred in the month of January and the highest average temperature occurred in the month of August in Eskisehir. The province's annual average temperature (11°C) is lower than Turkey's average (13.1°C).

## 2. POPULATION

### POPULATION OF THE ESKISEHIR PROVINCE (2010-2015)



By the year 2015, 1.05% of the Turkey's population lives in Eskisehir.

Women constitute 50.14% of total population of Eskisehir. According to 2015 data, the population density is 60 people per square km in Eskisehir, whereas this number is 102 people in Turkey.

Between 2014 and 2015, Eskisehir's population increased by 17.7 per mille. Net migration rate of the province is 9.4 per mille in the same period.

According to 2011 data, the average household size of Eskisehir is 3, while this number is 3.8 in Turkey.

Population	Turkey	Eskisehir
2010	73 722 988	764 584
2011	74 724 269	781 247
2012	75 627 384	789 750
2013	76 667 864	799 724
2014	77 695 904	812 320
2015	78 741 053	826 716

ESKISEHIR

KEY FIGURES

2015

Source: TÜİK-ADNKS

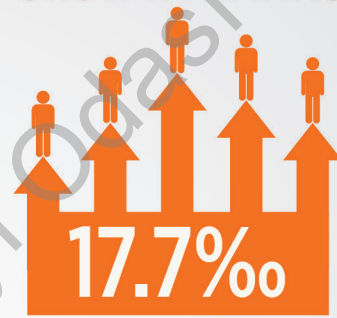
## 2. POPULATION

SHARE IN  
TURKEY'S POPULATION



IS 1.05%

POPULATION  
GROWTH RATE IS



POPULATION  
INCREASED  
BY 8.1%  
SINCE  
2010



50.14%  
OF THE  
POPULATION IS  
WOMEN

### 3. DEMOGRAPHY

#### TURKEY

2015

#### ESKISEHIR



The demographic structure of Turkey shows that it can be seen that 32.35% of the population is under age 20 by the year 2015. This ratio is 25.17% in Eskişehir.

Regarding the share of population 65 years and over, 8.25% of the Turkey's total population is at this age group, whereas this figure is 10.56% for Eskişehir.

The median age for year 2015 is 31 for Turkey and 35.3 for Eskişehir.

ESKISEHIR

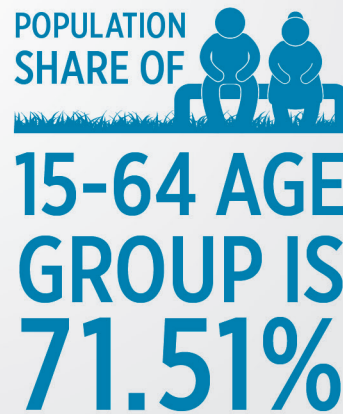
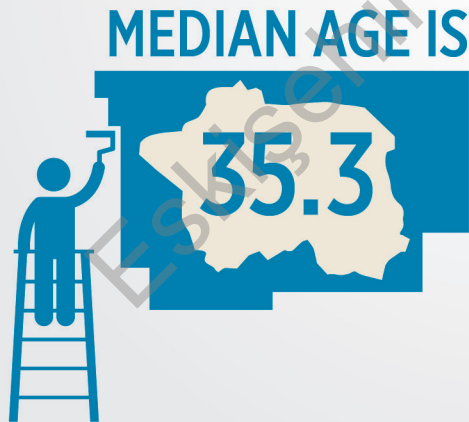
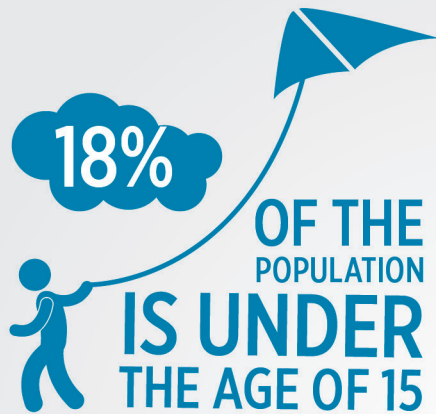
KEY FIGURES

2015

Source: TUIK data with  
BEBKA calculations

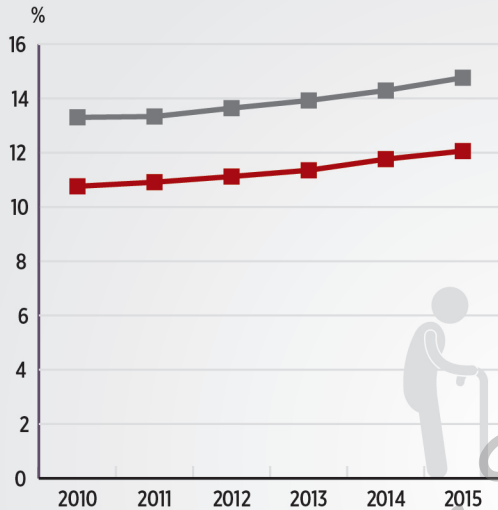


### 3. DEMOGRAPHY

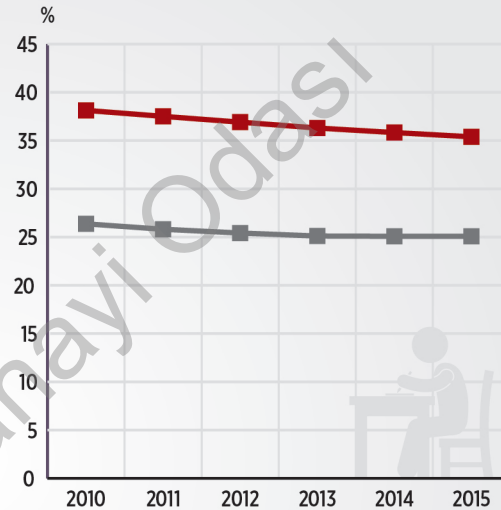


### 3. DEMOGRAPHY

#### OLD AGE DEPENDENCY RATIO



#### YOUNG AGE DEPENDENCY RATIO



■ Eskişehir

■ Turkey

The age structure of a population is a factor that affects socio economic issues. Old and young dependency indicators represent how much the population aged under the age of 15 and over the age of 65 are dependent on working age population. According to these indicators, policy choices like investments to schools for young people and to health for elderly people are arising.

During the years between 2010 and 2015, the old age dependency ratio is rising, whereas the young age dependency ratio is declining. The old age dependency ratio of Eskişehir is parallel with the Turkey's average; the young age dependency ratio is below the national average.

ESKİŞEHİR

KEY FIGURES

2015

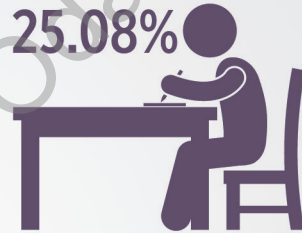
Source: TUIK data with  
BEBKA calculations

### 3. DEMOGRAPHY

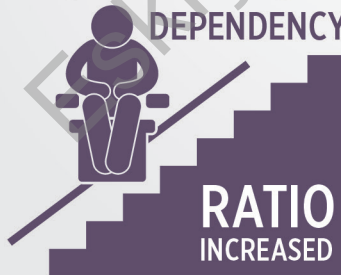
**THE OLD AGE  
DEPENDENCY  
RATIO IS  
14.76%**



**THE YOUNG AGE  
DEPENDENCY  
RATIO IS  
25.08%**



**2010-2015  
OLD AGE  
DEPENDENCY**



**2010-2015  
YOUNG AGE  
DEPENDENCY**



ESKİŞEHİR

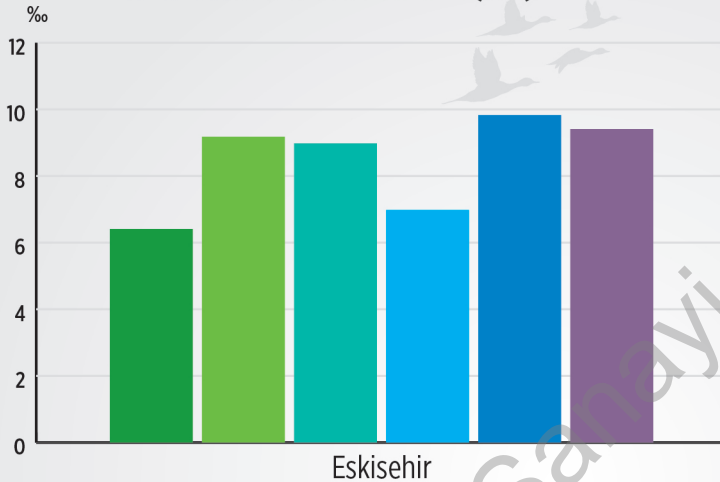
KEY FIGURES

2015

Based on 2015 data

### 3. DEMOGRAPHY

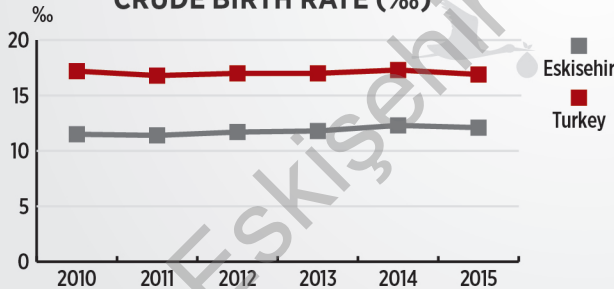
#### NET MIGRATION RATE (‰)



Net migration rate has increased progressively since 2015 in Eskisehir. In terms of number of kids, total fertility rate of Eskisehir (1.55) is below than Turkey's average (2.14) in the year 2015.

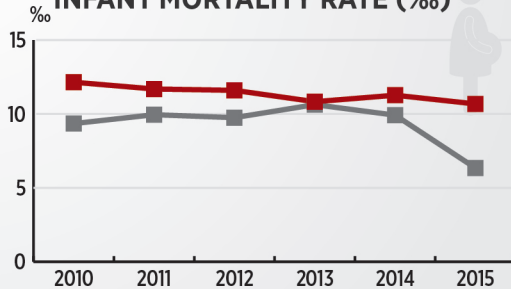


#### CRUDE BIRTH RATE (‰)



Crude birth rate, that is the number of births per thousand people, is below the Turkey's average in Eskisehir.

#### INFANT MORTALITY RATE (‰)



The number of infant deaths per thousand live births is below the country average for the 2010-2015 period.

### 3. DEMOGRAPHY


**NET  
MIGRATION  
RATE IS  
9.41‰**




**RANKS  
8TH  
IN NET  
IMMIGRATION RATE**



**THE CRUDE  
BIRTH  
RATE IS  
12.1‰**

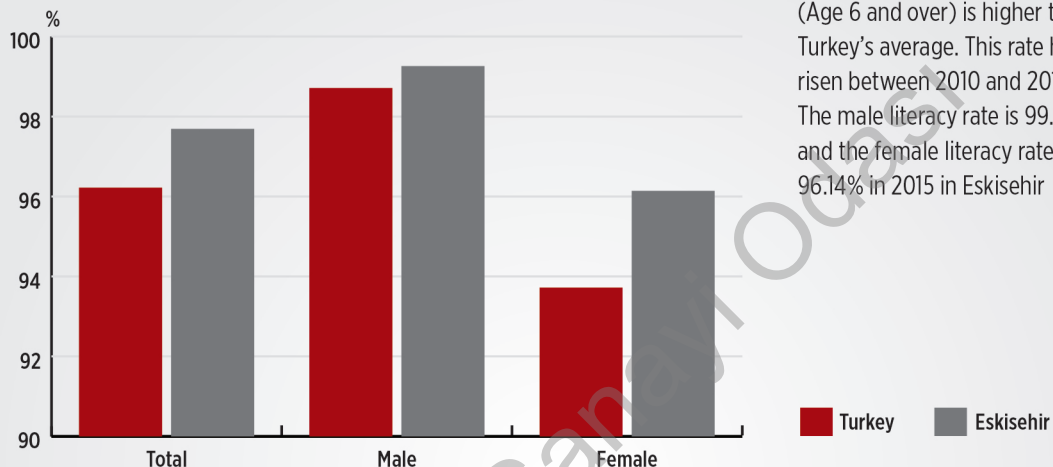


**INFANT  
MORTALITY  
RATE IS  
6.35‰**



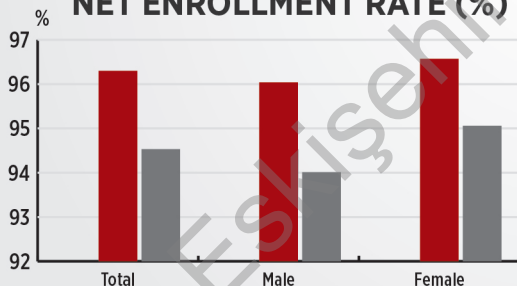
## 4. EDUCATION

### 2015 LITERACY RATE (%) (AGE 6 AND OVER)



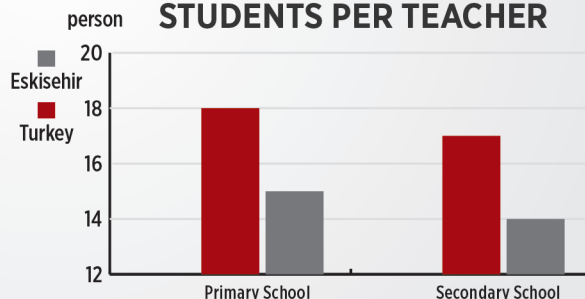
The literacy rate of Eskisehir (Age 6 and over) is higher than Turkey's average. This rate has risen between 2010 and 2015. The male literacy rate is 99.26% and the female literacy rate is 96.14% in 2015 in Eskisehir

### PRIMARY SCHOOL NET ENROLLMENT RATE (%)



In 2014-2015, the primary school net enrollment rate (94.53%) is lower than the secondary school net enrollment rate (96.57%) in Eskisehir. The primary school net enrollment rate is lower than Turkey's average in Eskisehir.

### NUMBER OF STUDENTS PER TEACHER



2014-2015

About number of students per teacher, Eskisehir is under the country average both in primary (15) and secondary schools (14) in 2014 and 2015 school year.

ESKISEHIR

KEY FIGURES

2015

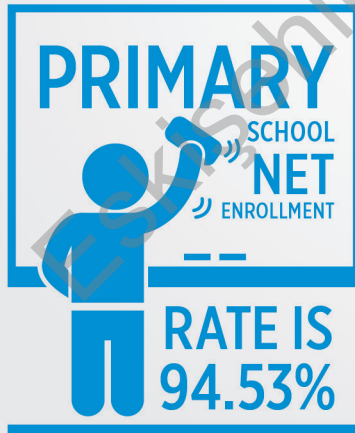
Source: TUIK data with  
BEBKA calculations

#### 4. EDUCATION

LITERACY  
RATE IS  
ABOVE  
THE TURKEY'S  
**97.69%**



188 OUT OF  
THOUSAND  
PEOPLE  
ARE AT  
LEAST COLLEGE  
GRADUATE

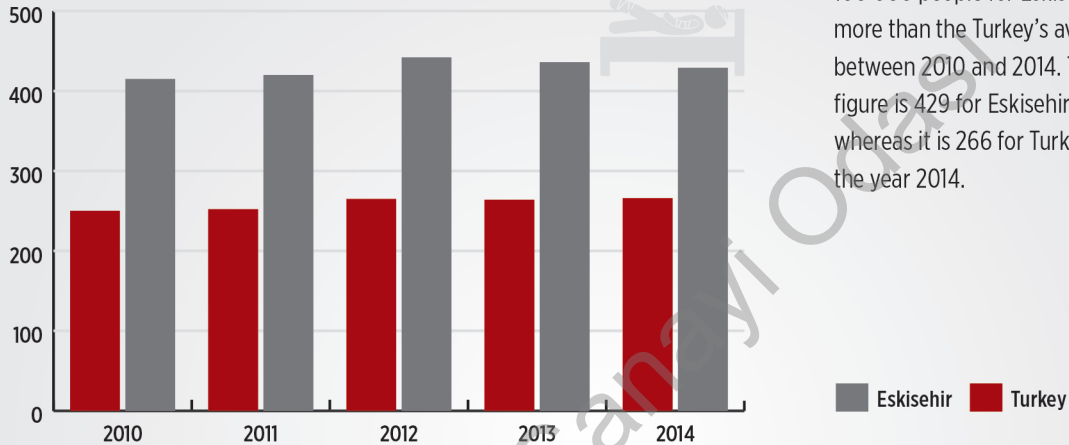


**NUMBER OF  
STUDENTS PER  
PRIMARY SCHOOL  
TEACHER IS 15**

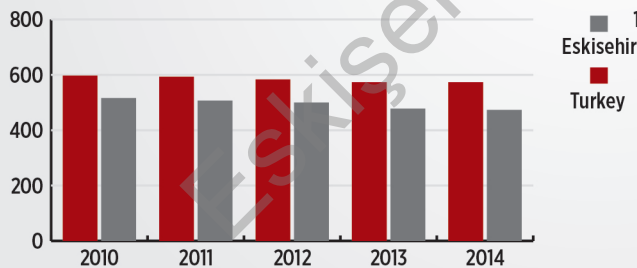


## 5. HEALTH

### NUMBER OF HOSPITAL BEDS PER 100 000 PEOPLE

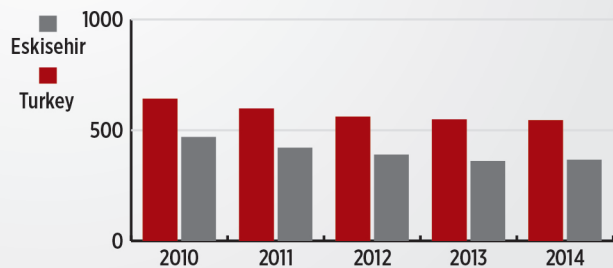


### NUMBER OF PEOPLE PER PHYSICIAN



Number of people per physician for Eskisehir is below the Turkey's average for the 2010-2014 period.

### NUMBER OF PEOPLE PER NURSE

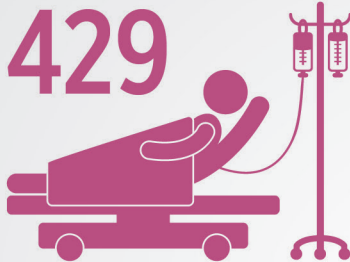


The number of people per nurse in Eskisehir (367) is below the Turkey's average (545) in the year 2014.



NUMBER OF  
HOSPITAL BEDS PER  
100 000 PEOPLE IS

429



NUMBER OF  
PHYSICIANS

PER 100 000  
PEOPLE IS

212



NUMBER OF  
PHARMACIES  
PER 100 000  
PEOPLE IS

38



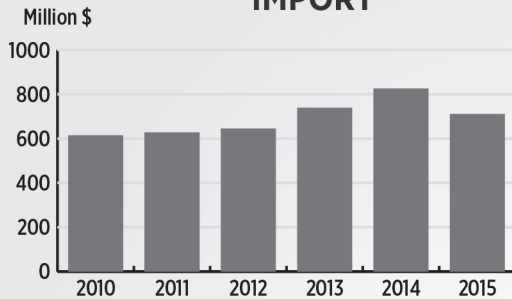
NUMBER OF  
NURSES PER  
100 000 PEOPLE IS

272



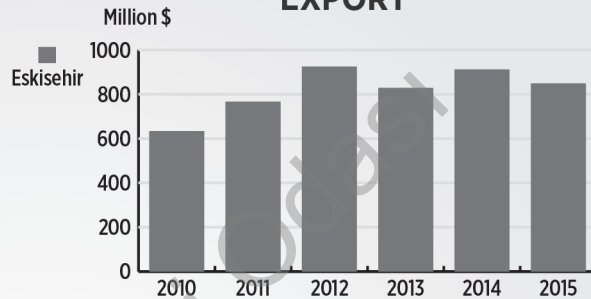
## 6. FOREIGN TRADE

### IMPORT



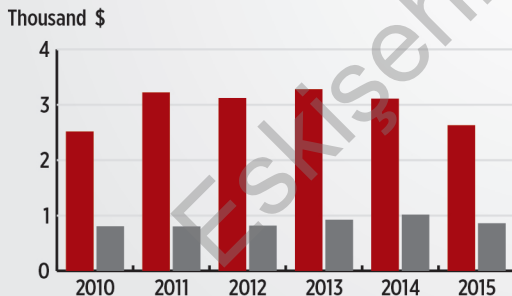
The annual average import volume of Eskisehir is 694 million \$ per year in between 2010 and 2015.

### EXPORT



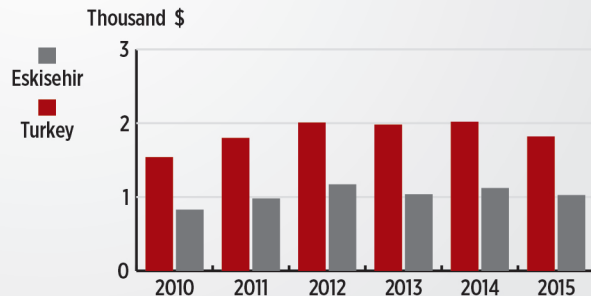
The annual average export volume of Eskisehir is 819 million \$ per year in between 2010 and 2015.

### IMPORT PER CAPITA



Import per capita for Eskisehir is below the average of Turkey between 2010 and 2015.

### EXPORT PER CAPITA



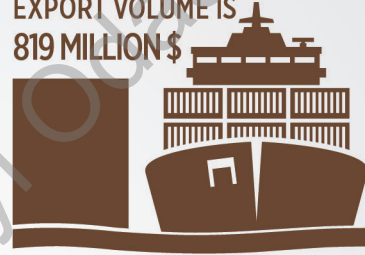
Export per capita for Eskisehir is below the average of Turkey between 2010 and 2015.

## 6. FOREIGN TRADE

EXPORT  
PER CAPITA  
IS  
1 026\$



2010-2015  
ANNUAL AVERAGE  
EXPORT VOLUME IS  
819 MILLION \$



IMPORT PER  
CAPITA  
IS 860\$

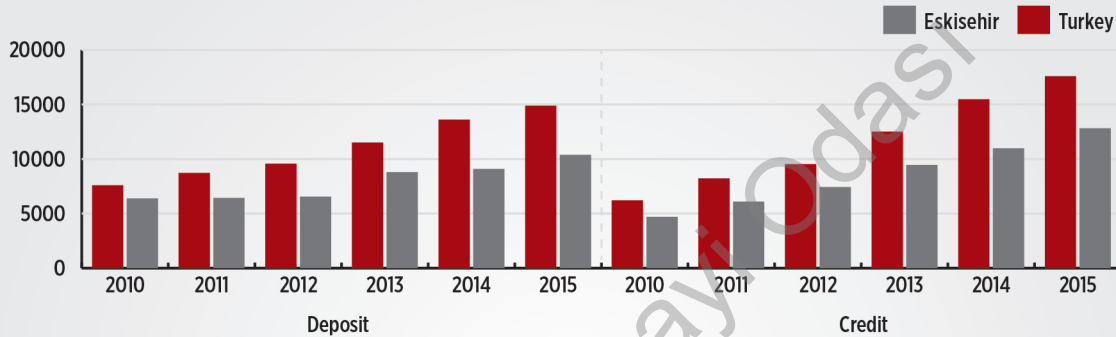


THE SHARE  
IN TURKEY'S  
EXPORT IS



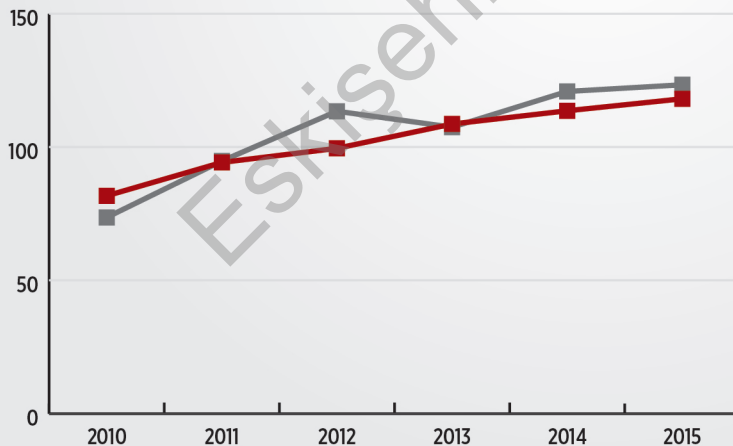
## 7. BANKING

### BANK CREDIT AND DEPOSIT PER CAPITA (TL)



In regards to the banking indicators, Eskisehir has 0.69% of the country's deposits and 0.73% of the bank credits by the year 2015. In between 2010 and 2015 the deposit per capita increased by 63%, whereas the bank credit per capita went up by 173% in Eskisehir.

### CREDIT/DEPOSIT RATIO (%)



For the 2010-2015 period, credit/deposit ratio has risen from 74% to 123% in Eskisehir. The share of foreign currency is 27% among the total deposit in Eskisehir by the year 2015.

ESKISEHIR

KEY FIGURES

2015

Source: TBB data with  
BEBKA calculations

## 7. BANKING

CREDIT PER  
CAPITA IS



THE 10<sup>TH</sup>  
PROVINCE  
OF TURKEY  
IN CREDIT  
PER CAPITA



THE  
DEPOSIT  
PER CAPITA IS  
10 382 TL



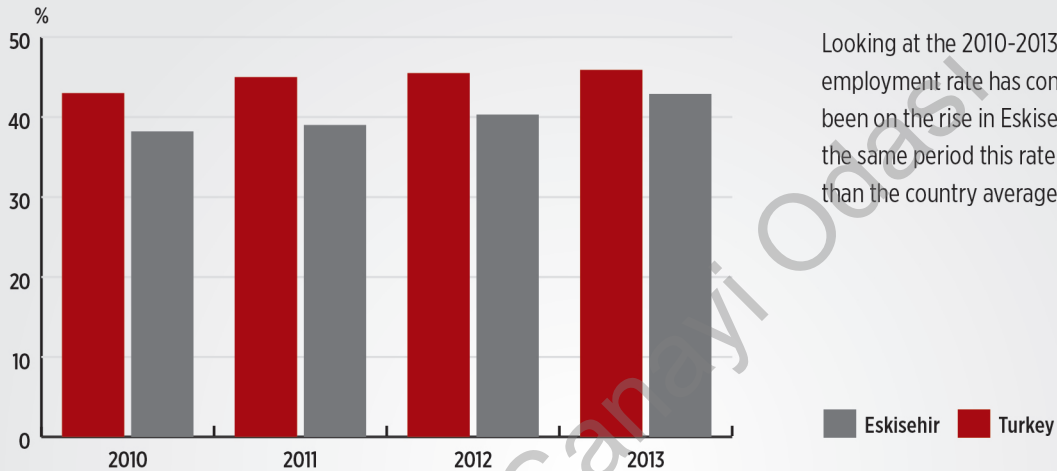
THE CREDIT/DEPOSIT



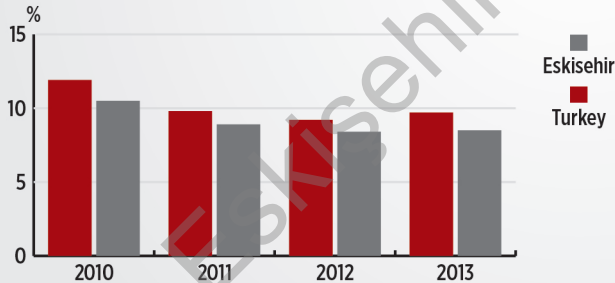
RATIO IS %123

## 8. EMPLOYMENT AND LABOR FORCE

### EMPLOYMENT RATE (AGE 15+)(%)

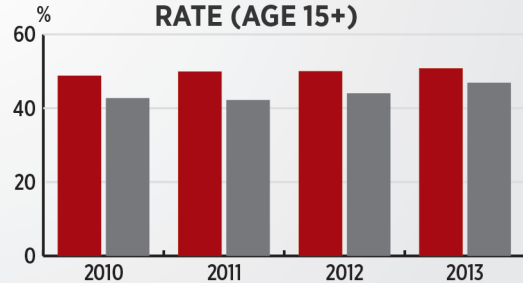


### UNEMPLOYMENT RATE (AGE 15+) (%)



In between the years 2010 and 2013, the unemployment rate is below than the Turkey's average. This rate went down to 8.5% in the year 2013.

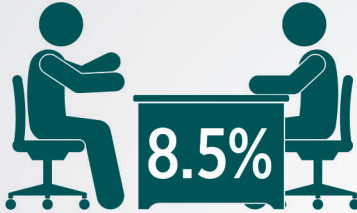
### LABOR FORCE PARTICIPATION RATE (AGE 15+)



Labor force participation rate is lower than Turkey's average during the years between 2011 and 2013. In 2014 average daily insurable earnings in Eskisehir (66.81 TL) which is higher than Turkey's average (64.42 TL).

## 8. EMPLOYMENT AND LABOR FORCE

UNEMPLOYMENT  
RATE IS



EMPLOYMENT

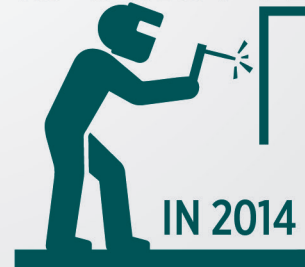


RATE IS  
42.9%

LABOR FORCE  
PARTICIPATION  
RATE IS



AVERAGE DAILY  
INSURABLE EARNINGS  
IS 66.81 TL



ESKİSEHİR

KEY FIGURES

2015

Based on 2013 data

## 9. R&D AND INNOVATION

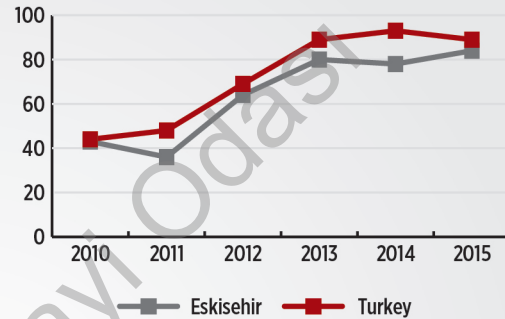
### ACTIVE R&D CENTERS

Sector	Eskisehir
Machinery and Equipment	2
Automotive	1
Aviation	2
Consumer Durables	1
Food	1
<b>Total</b>	<b>7</b>

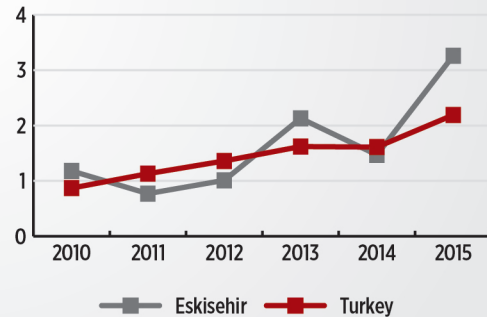
7 R&D centers of Turkey are located in Eskisehir.

Eskisehir is the 8th province that has the most number of R&D centers in Turkey.

### NUMBER OF TRADEMARK REGISTRATIONS PER HUNDRED THOUSAND PEOPLE



### NUMBER OF PATENT REGISTRATIONS PER HUNDRED THOUSAND PEOPLE



The number of patent registrations of Eskisehir is higher. On the contrary, the number of trademark registrations is lower than the average of Turkey in 2015.



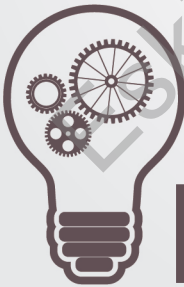
NUMBER OF  
UTILITY  
MODEL  
REGISTRATIONS  
IS 22



RANKS  
9<sup>TH</sup> IN  
NUMBER  
OF PATENT  
REGISTRATIONS



NUMBER  
OF INDUSTRIAL  
DESIGN  
REGISTRATIONS  
IS 60



RANKS 8<sup>TH</sup> IN  
NUMBER OF  
ACTIVE  
R&D  
CENTERS



## 10. ENVIRONMENT

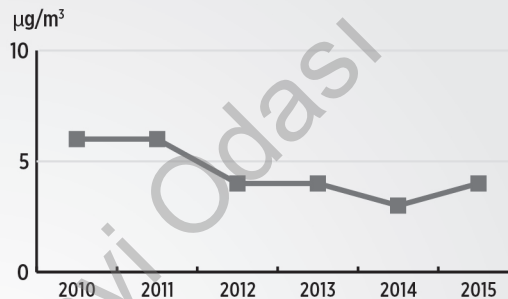
### PROPORTION OF WASTE DISPOSED BY SANITARY LANDFILL SITE (%)

	Turkey	Eskisehir
2010	98,52	98,91
2012	98,87	99,18
2014	99,13	96,69

Considering the waste management, proportion of waste disposed by sanitary landfill site in Eskisehir is below the Turkey's average in 2014.

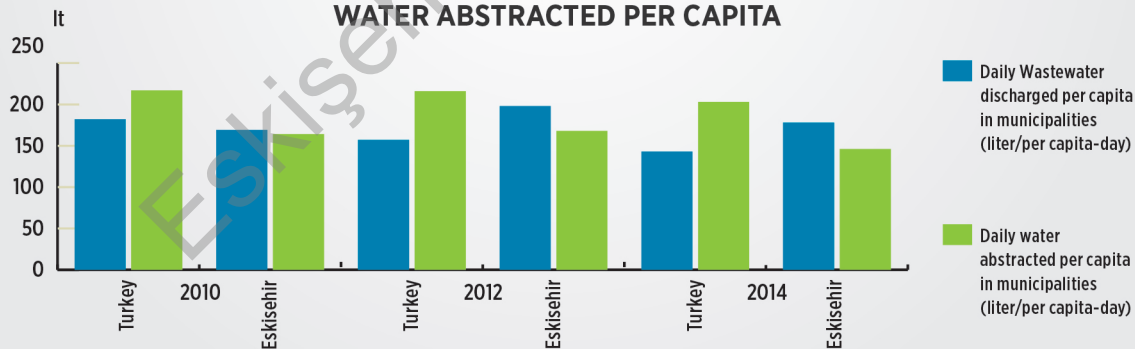
24% of Eskisehir area is covered by forests.

### AVERAGE SULPHUR DIOXIDE (SO<sub>2</sub>) IN AIR QUALITY MEASUREMENTS



In 2015, that affects the air quality in Eskisehir, the Sulphur dioxide (SO<sub>2</sub>) rate and particulate matter rate (PM<sub>10</sub>) is lower than the Turkey's average.

### WASTEWATER DISCHARGED PER CAPITA AND DRINKING WATER ABSTRACTED PER CAPITA



Both amount of wastewater discharged per capita and drinking water abstracted per capita of Eskisehir –except for 2012- are below the Turkey's average.

ESKISEHIR

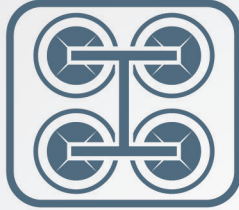
KEY FIGURES

2015

Source: TUIK, CSB, OSİB data  
with BEKA calculations

## 10. ENVIRONMENT

RATE OF POPULATION  
SERVED BY WASTEWATER  
TREATMENT  
PLANTS  
IN 2014  
**83%**



IN 2013 24%  
OF ESKISEHIR AREA



IS COVERED  
BY FORESTS

IN  
2015 4<sup>TH</sup>



LOWEST  
PM<sub>10</sub> RATED  
CITY IN TURKEY

2014 DAILY WASTEWATER  
DISCHARGED

PER  
CAPITA IS

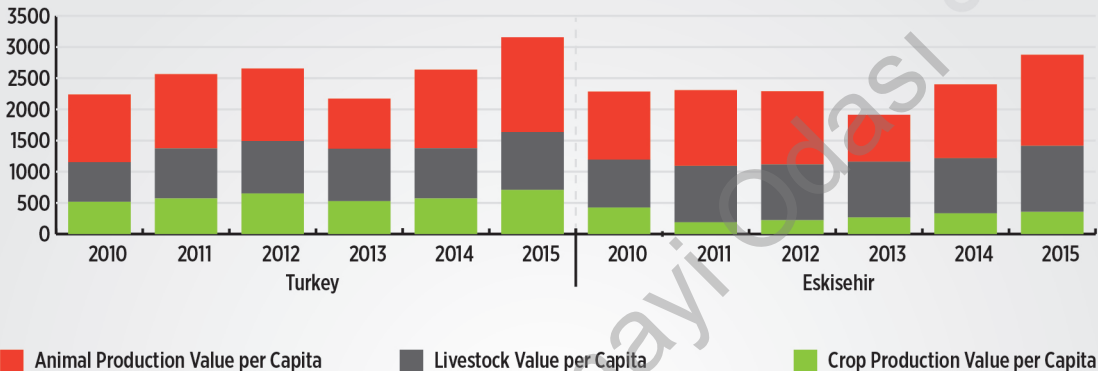
**178**

LITERS



# 11. AGRICULTURE

## AGRICULTURAL PRODUCTION VALUE PER CAPITA (TL)



By the year 2015, 80% of the agricultural production value of Eskişehir is from crop production. Eskişehir is below the country average in agricultural production value per capita.

## NUMBER OF TRACTORS PER THOUSAND HECTARES OF AGRICULTURAL LAND OPERATED

	Turkey	Eskişehir
2010	45	36
2011	48	34
2012	50	37
2013	59	29
2014	60	28

Tractors are important part of agricultural mechanization. In terms of the number of tractors per thousand hectares of agricultural land operated, Eskişehir is lower than the country average.

\*Land operated has been taken as the total sown area, fallow land, vegetable and ornamental plants area.

ESKİŞEHİR

KEY FIGURES

2015

Source: TUIK data with  
BEBKA calculations

## 11. AGRICULTURE

AGRICULTURAL PRODUCTION  
VALUE IS 1.5 BILLION \$



CROP PRODUCTION  
VALUE IS 1.2 BILLION \$



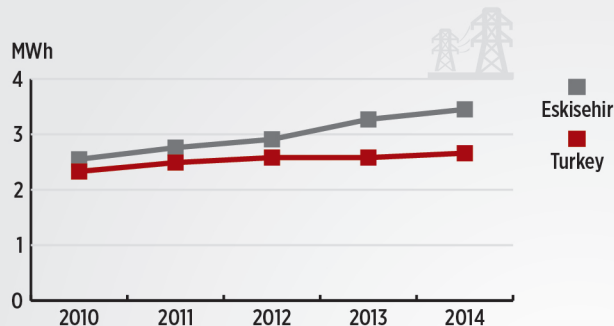
IN 2014, NUMBER OF  
TRACTORS PER  
THOUSAND HECTARES  
OF AGRICULTURAL  
LAND



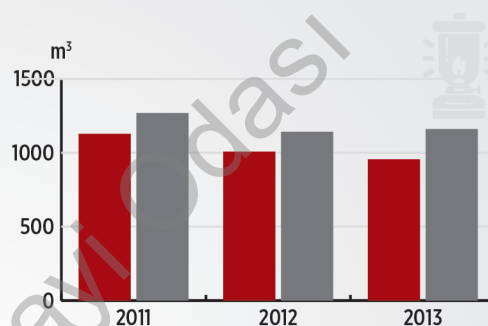
CROP PRODUCTION'S  
**SHARE IS**  
**80%**  
IN AGRICULTURAL  
PRODUCTION  
VALUE IN 2015

## 12. ENERGY

### NET ELECTRICITY CONSUMPTION PER CAPITA

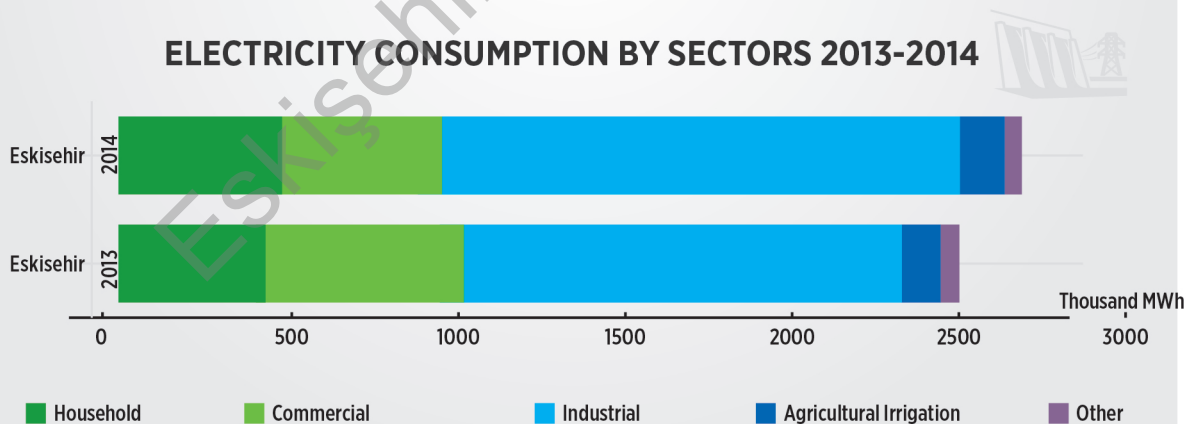


### NATURAL GAS CONSUMPTION PER HOUSEHOLD SUBSCRIPTION



Energy is an important input for carrying out economic and human activities. In 2014, 1.35% of the consumed electricity belongs to Eskisehir. Industrial electricity consumption share is 60.4% of total electricity consumption of Eskisehir. On the other hand, 1.7% of the national natural gas consumption was in Eskisehir in year 2014.

### ELECTRICITY CONSUMPTION BY SECTORS 2013-2014



ESKISEHIR

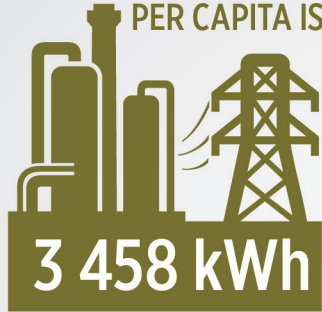
KEY FIGURES

2015

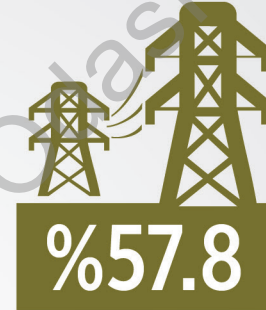
Source: TEDAS, EPDK data  
with BEBKA calculations

## 12. ENERGY

NET ELECTRICITY  
CONSUMPTION  
PER CAPITA IS



INDUSTRY'S SHARE IN  
ELECTRICITY  
CONSUMPTION IS

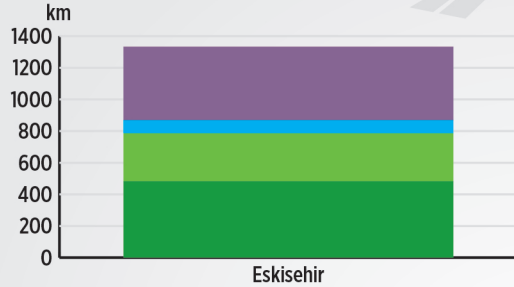


NATURAL  
GAS CONSUMPTION



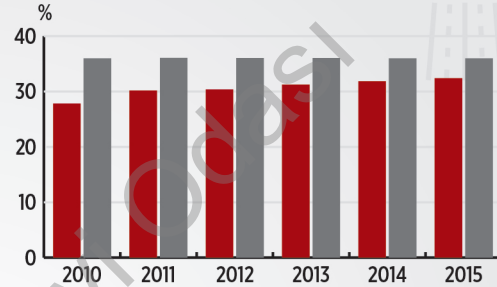
## 13. TRANSPORTATION

### 2015 ROAD LENGTHS



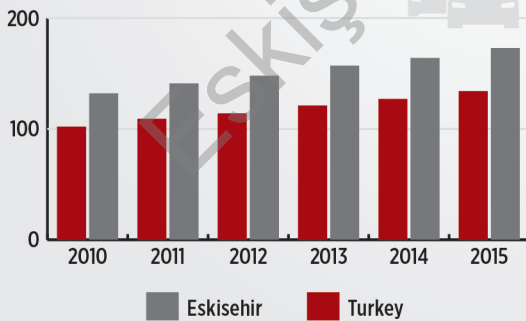
■ Railroads 
 ■ Other Provincial Roads 
 ■ Divided Provincial Roads 
 ■ State Roads 
 ■ Divided State Roads 
 ■ Highways

### DIVIDED ROAD RADIO IN STATE AND PROVINCIAL ROADS



■ Eskisehir 
 ■ Turkey

The crucial transportation projects have been carried out in Eskisehir region owing to its location between Bursa, Ankara and Izmir provinces. Road length per hundred km<sup>2</sup> is 6.1 km in Eskisehir which is lower than the Turkey's 8.6 km average; on the other hand, the railway length per hundred km is 3.5 km that is higher than Turkey's 1.3 km average. In terms of divided road ratio, Eskisehir's figure is higher than the country average in 2015



■ Eskisehir 
 ■ Turkey

### NUMBER OF AUTOMOBILES PER THOUSAND PEOPLE

In 2015, number of automobiles per thousand people in Eskisehir (173) is more than Turkey's average (134).

Number of road motor vehicles per thousand people in Eskisehir (299) is above the Turkey's average (254) in year 2015.

ESKISEHIR

KEY FIGURES

2015

Source: TUIK, KGM data  
with BEBKA calculations



### 13. TRANSPORTATION

5<sup>TH</sup> PROVINCE IN  
NUMBER OF  
AUTOMOBILES  
PER THOUSAND



DIVIDED ROAD  
RATIO



35.98%

RANKS 6<sup>TH</sup> IN  
RAILWAY  
LENGTH PER  
HUNDRED KM<sup>2</sup>

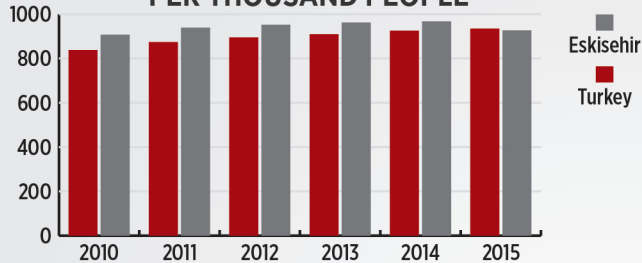


ROAD  
LENGTH PER  
HUNDRED KM<sup>2</sup> IS



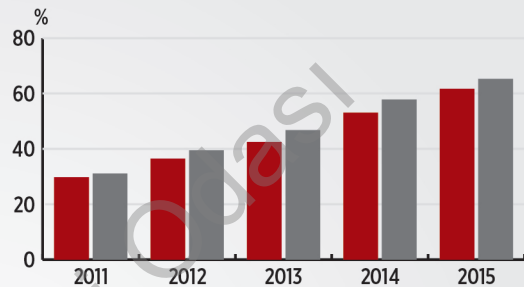
## 14. COMMUNICATION

### NUMBER OF MOBILE SUBSCRIPTIONS PER THOUSAND PEOPLE



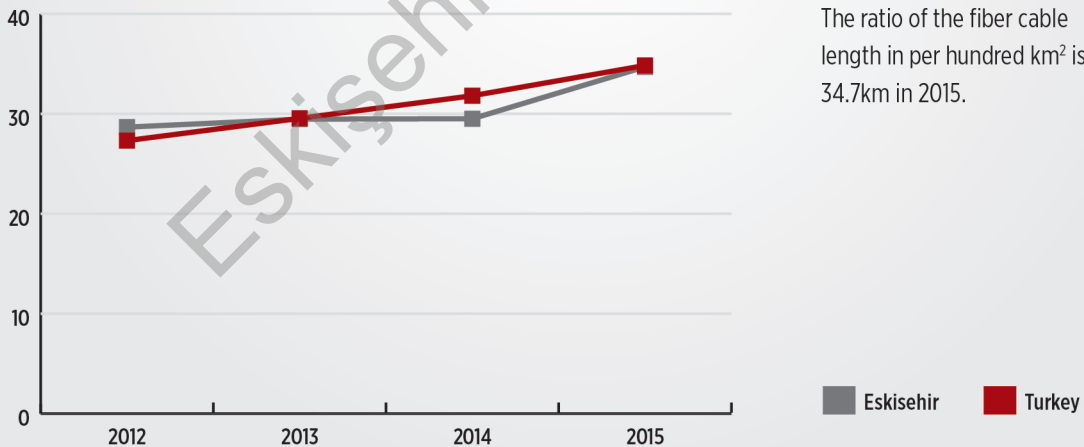
The number of mobile subscriptions per thousand people in Eskisehir (927) is close to the Turkey's average (935) in 2015.

### BROADBAND INTERNET PENETRATION



In terms of broadband internet penetration rate, Eskisehir (65.3%) is above the country average (61.7%).

### LENGTH OF FIBER CABLE PER HUNDRED KM<sup>2</sup>



The ratio of the fiber cable length in per hundred km<sup>2</sup> is 34.7km in 2015.

ESKISEHIR

KEY FIGURES

2015

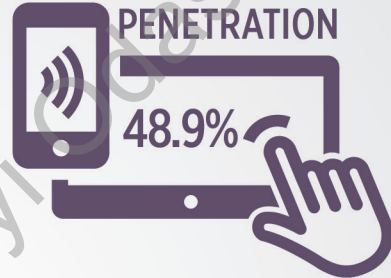
Source: TUIK and BTK data  
with BEBKA calculations


## 14. COMMUNICATION

MOBILE SUBSCRIPTIONS  
**PER**  
THOUSAND  
PEOPLE IS  
**927**



MOBILE INTERNET  
PENETRATION



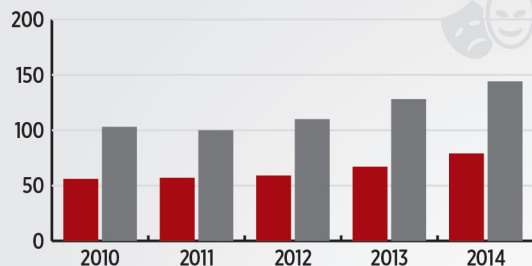
FIBER CABLE  
LENGTH PER  
  
HUNDRED KM<sup>2</sup> IS  
**34.7 KM**

**RANKS 6<sup>TH</sup> IN**  
BROADBAND  
INTERNET  
PENETRATION

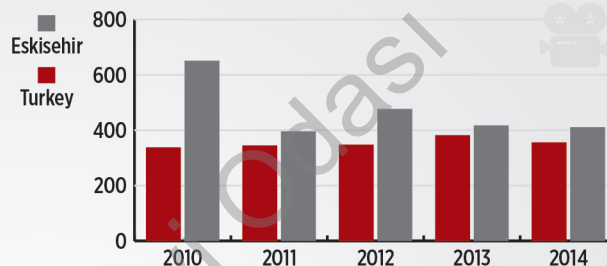


## 15. CULTURE

### NUMBER OF CINEMA AND THEATRE AUDIENCE PER HUNDRED PEOPLE



### NUMBER OF CINEMA SEATS PER 100 000 PEOPLE



Number of cinema and theatre audience per hundred people in Eskisehir is more than the Turkey's average in years between 2010 and 2014. There are 411 cinema seats per hundred thousand people in Eskisehir.

### NUMBER OF VISITORS FOR MUSEUM AND RUINS PER 100 000 PEOPLE

	Turkey	Eskisehir
2012	38 057	4 555
2013	38 565	4 541
2014	37 711	2 854

In regard to the number of visitors for museum and ruins a sharp decrease can be obtained in the last year.

Number of artifacts per museum in Eskisehir (3 253) is less than the Turkey's average (8 207).

### NUMBER OF PUBLIC LIBRARY USERS PER THOUSAND PEOPLE

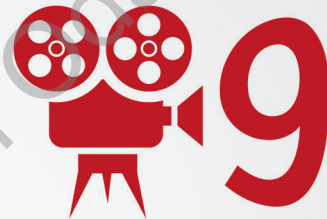
	Turkey	Eskisehir
2010	262	393
2011	252	364
2012	258	382
2013	264	388
2014	268	399

The number of public library users per thousand people of Eskisehir has been lower than the country average. This figure is in constant increase for Eskisehir during the years between 2011 and 2014.

**2<sup>ND</sup> PROVINCE**  
IN NUMBER OF CINEMA  
AND THEATRE AUDIENCE  
PER HUNDRED



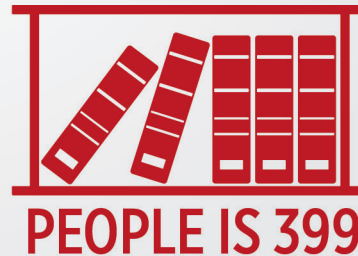
**NUMBER OF CINEMA  
AND THEATRE SEATS  
PER THOUSAND  
PEOPLE IS**



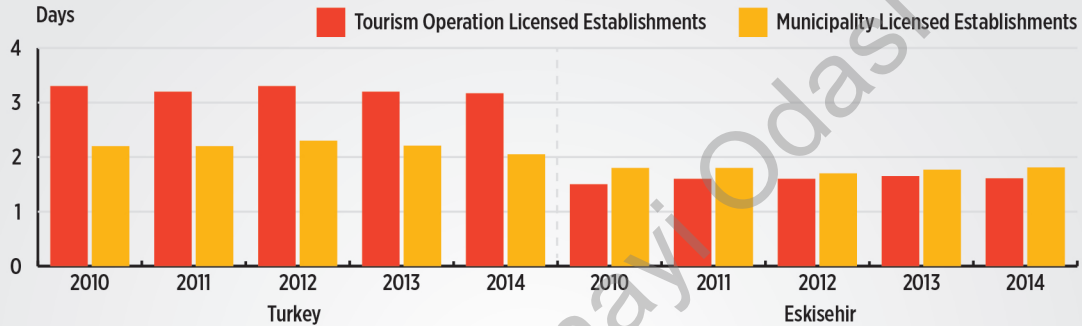
**NUMBER OF VISITORS  
FOR MUSEUM AND RUINS  
PER THOUSAND PEOPLE IS**



**NUMBER OF PUBLIC  
LIBRARY USERS  
PER THOUSAND**

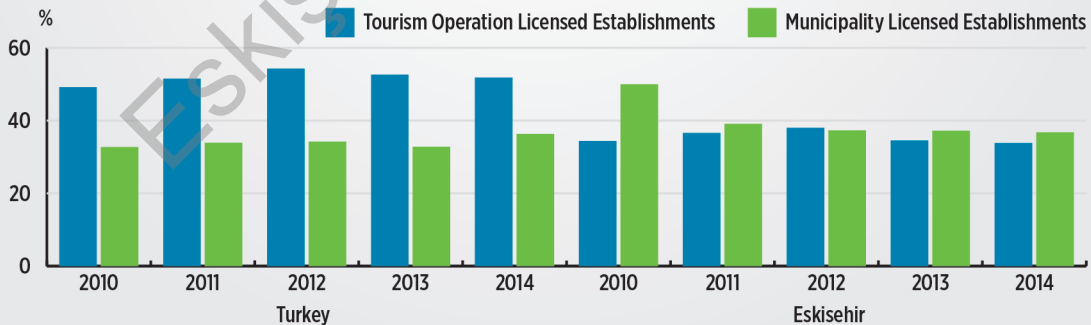


## AVERAGE LENGTH OF STAY IN MUNICIPALITY AND TOURISM OPERATION LICENSED ACCOMMODATION ESTABLISHMENTS



In 2014, the average length of stay in touristic establishments was 1.6 days in Eskisehir that stands out with its history and culture tourism. This figure was 2.7 days in Turkey. The average length of stay of foreign tourists was 2.6 days, whereas for local tourists this figure was 1.6 days.

## OCCUPANCY RATE IN MUNICIPALITY AND TOURISM OPERATION LICENSED ACCOMMODATION ESTABLISHMENTS (%)



## 16. TOURISM

THE AVERAGE LENGTH  
OF STAY OF FOREIGN  
TOURISTS IS



2.6 DAYS

THE AVERAGE  
LENGTH OF  
STAY IN  
TOURISTIC  
ESTABLISHMENTS IS



THE OCCUPANCY  
RATE OF  
TOURISM  
OPERATION  
LICENSED  
ESTABLISHMENTS  
IS 33.8%

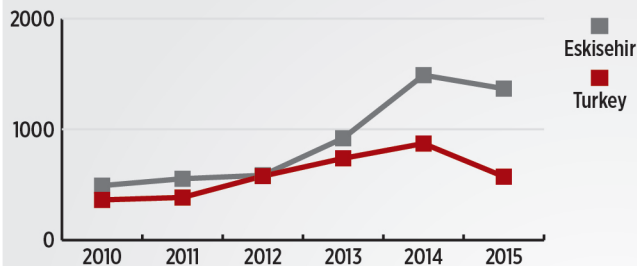


THE AVERAGE LENGTH  
OF STAY OF  
LOCAL TOURISTS IS



## 17. SPORTS

### NUMBER OF ACTIVE SPORTSMEN PER 100 000 PEOPLE



Number of active sportsmen per hundred thousand people in Eskisehir (1367) is higher than the Turkey's average (573) in the year 2015. There are 5 838 amateur soccer players in Eskisehir by the end of 2014.

### NUMBER OF SPORTS CLUBS BY TYPE

2015	Total	Military	Specialized	Institutional	School	Youth
Turkey	13 706	6	516	1 157	1 219	10 808
Eskisehir	175	1	6	27	15	126

There are 175 sports clubs in Eskisehir by the year 2015. Number of sports clubs per hundred thousand people in Eskisehir (21) is over than the Turkey's average (17).

### NUMBER OF SPORTSMEN (2015)

	Licensed Sportsmen		Active Sportsmen	
	Turkey	Eskisehir	Turkey	Eskisehir
Female	1 116 401	21 629	154 219	3 977
Male	2 417 911	36 432	297 204	7 327
Total	3 534 312	58 061	451 219	11 304

ESKISEHIR

KEY FIGURES

2015

Source: TUIK, SGM data with  
BEBKA calculations



## 17. SPORTS

NUMBER  
OF ACTIVE  
SPORTSMEN PER  
100 000 PEOPLE



NUMBER OF

**IS 175**

**SPORTS CLUBS**

5 838 AMATEUR  
**SOCCER**  
PLAYERS



**IN 2014**

ACTIVE SPORTSMEN  
**SHARE IN**  
TOTAL IS



ESKİŞEHİR

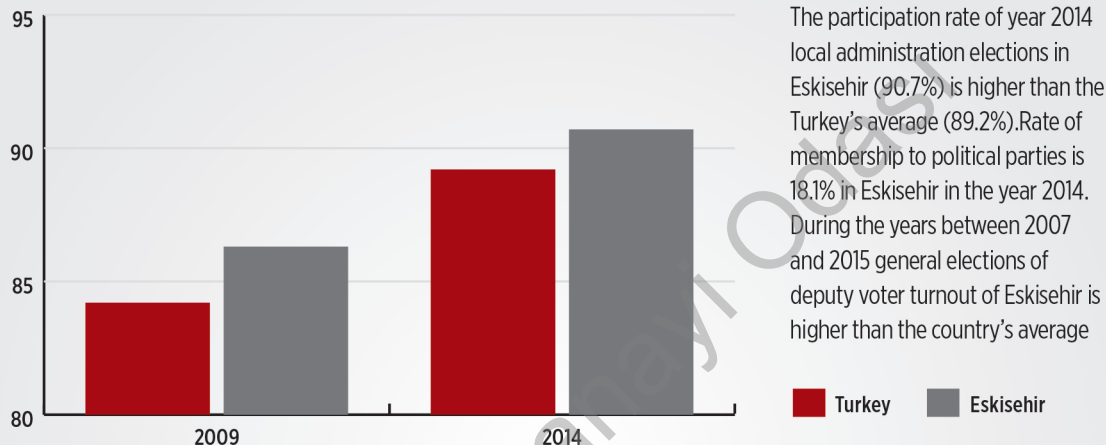
KEY FIGURES

2015

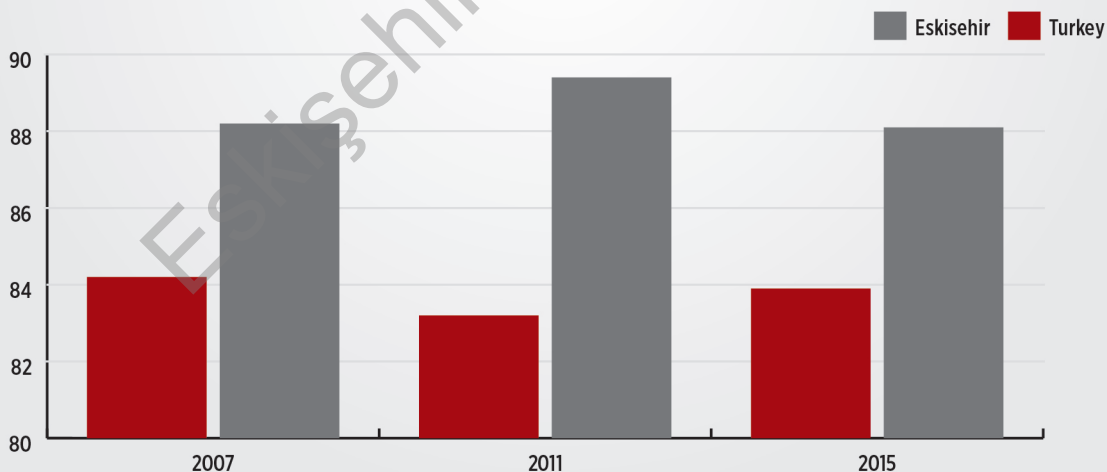
Based on 2015 data

## 18. CIVIC ENGAGEMENT

### LOCAL ADMINISTRATION ELECTIONS VOTER TURNOUT (%)



### VOTER TURNOUT OF GENERAL ELECTIONS OF DEPUTY (%)



ESKISEHIR

KEY FIGURES

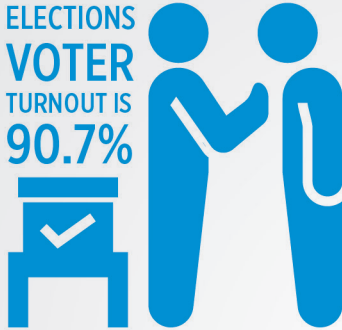
2015

Source:TUIK

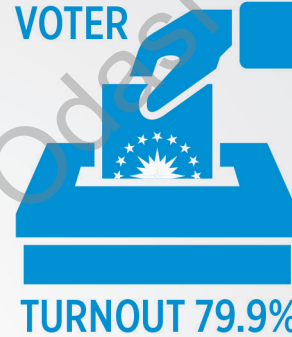
## 18. CIVIC ENGAGEMENT

### 2014 LOCAL ADMINISTRATION

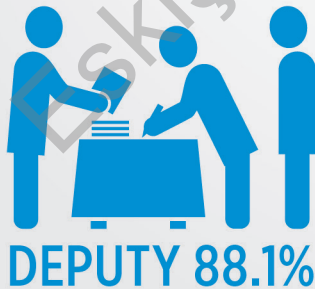
ELECTIONS  
VOTER  
TURNOUT IS  
90.7%



### 2014 PRESIDENTIAL ELECTION VOTER



### 2015 VOTER TURNOUT OF GENERAL ELECTIONS OF



### RATE OF MEMBERSHIP TO POLITICAL PARTIES



## BIBLIOGRAPHY

<b>TUIK</b>	Turkish Statistical Institute
<b>ADNKS</b>	Address Based Population Registration System
<b>BTK</b>	Information and Communication Technologies Authority
<b>CSB</b>	Ministry of Environment and Urbanization
<b>EGM</b>	Turkish National Police
<b>EPDK</b>	Energy Market Regulatory
<b>KGM</b>	General Directorate of Highways
<b>KTB</b>	Ministry of Culture and Tourism
<b>MGM</b>	Turkish Meteorological Service
<b>OSİB</b>	Ministry of Forestry and Water Management
<b>SGM</b>	General Directorate of Youth and Sports
<b>TBB</b>	The Banks Association Of Turkey
<b>TEDAŞ</b>	Turkish Electricity Distribution Corporation
<b>TPE</b>	Turkish Patent Institute

## DEFINITIONS

**Infant Mortality Rate:** It is the number of deaths of infants under one year of age per 1000 live births in a given year.

**Youth Age Dependency Ratio:** The number of people in the age group of 0-14 per 100 people in the 15-64 age group.

**Broadband Internet Penetration:** The ratio of the number of internet subscriptions to the total population of the province.

**Employment Rate:** It is the ratio of employed people to the non-institutional working age population.

**Labor Force Participation Rate:** It is the ratio of the labor force to non-institutional working age population.

**Unemployment Rate:** The ratio of unemployed people to labor force.

**Crude Birth Rate:** the number of live births per 1000 population in given year.

**Net Migration Rate:** It is the number of net migration (the difference between immigration and emigration) per thousand people who are able to migrate.

**Net Enrollment Rate:** It is obtained by dividing the number of students of the theoretical age group enrolled in a specific level of education by the population in that age group.

**Population Growth Rate:** It is the population increase per 1000 population per year in between two years.

**Literacy Rate:** It is the number of people who can both read and write divided by the total population.

**Median Age:** The age of person in the middle when all the people in the population are ranked in ascending order.

**Old Age Dependency Ratio:** The number of people at the age 65 and over per 100 people in the 15-64 age group.


SHARE IN  
TURKEY'S POPULATION  
IS 1.05%



POPULATION  
GROWTH RATE IS  
17.7%



18%  
OF THE  
POPULATION  
IS UNDER  
THE AGE OF 15




10.56%  
OF THE  
POPULATION IS  
OVER THE  
AGE OF 65



THE OLD AGE  
DEPENDENCY  
RATIO IS  
14.76%



THE YOUNG AGE  
DEPENDENCY  
RATIO IS  
25.08%




POPULATION  
INCREASED  
BY 8.1%  
SINCE  
2010




50.14%  
OF THE  
POPULATION IS  
WOMEN



MEDIAN AGE IS  
35.3



POPULATION  
SHARE OF  
15-64 AGE  
GROUP IS  
71.51%



2010-2015  
OLD AGE  
DEPENDENCY  
RATIO  
INCREASED



2010-2015  
YOUNG AGE  
DEPENDENCY  
RATIO OF TURKEY  
AND ESKİSEHIR DECREASED



NET  
MIGRATION  
RATE IS  
9.41%



RANKS  
8TH  
IN NET  
IMMIGRATION RATE



LITERACY  
RATE IS  
ABOVE  
THE TURKEY'S  
97.69%



188 OUT OF  
THOUSAND  
PEOPLE  
ARE AT  
LEAST COLLEGE  
GRADUATE



NUMBER OF  
HOSPITAL BEDS PER  
100 000 PEOPLE IS  
429



NUMBER OF  
PHYSICIANS  
PER 100 000  
PEOPLE IS  
212




THE CRUDE  
BIRTH RATE IS  
12.1‰




INFANT  
MORTALITY RATE IS  
6.35‰



PRIMARY  
SCHOOL  
NET  
ENROLLMENT  
RATE IS  
94.53%



NUMBER OF  
STUDENTS PER  
PRIMARY SCHOOL  
TEACHER IS 15



NUMBER OF  
PHARMACIES  
PER 100 000  
PEOPLE IS  
38



NUMBER OF  
NURSES PER  
100 000 PEOPLE IS  
272



EXPORT PER  
CAPITA  
IS  
1 026\$



2010-2015  
ANNUAL AVERAGE  
EXPORT VOLUME IS  
810 MILLIONS



CREDIT PER  
CAPITA IS  
12 809 TL



THE 10TH  
PROVINCE  
OF TURKEY  
IN CREDIT  
PER CAPITA



UNEMPLOYMENT  
RATE IS  
8.5%



EMPLOYMENT  
RATE IS  
42%



NUMBER OF  
UTILITY  
MODEL  
REGISTRATIONS  
IS 22



RANKS  
9TH IN  
NUMBER OF  
PATENT  
REGISTRATIONS



IMPORT PER  
CAPITA  
IS 860\$



THE SHARE  
IN TURKEY'S  
EXPORT IS  
5.9%



THE  
DEPOSIT  
PER CAPITA IS  
10 382 TL



THE CREDIT/DEPOSIT  
RATIO IS 123



LABOR FORCE  
PARTICIPATION  
RATE IS  
46.9%



AVERAGE DAILY  
INSURABLE EARNINGS  
IS 66.81 TL  
IN 2014



NUMBER  
OF INDUSTRIAL  
DESIGN  
REGISTRATIONS  
IS 60



RANKS 8TH IN  
NUMBER OF  
ACTIVE  
R&D  
CENTERS



RATE OF POPULATION  
SERVED BY WASTEWATER  
TREATMENT  
PLANTS IN 2014  
83%



IN 2013 24%  
OF ESKİSEHİR AREA  
IS COVERED BY  
FORESTS



AGRICULTURAL PRODUCTION  
VALUE IS 1.5 BILLION \$  
IN 2015



CROP PRODUCTION  
VALUE IS 1.2 BILLION \$  
IN 2015



NET ELECTRICITY  
CONSUMPTION  
PER CAPITA IS  
3 458 kWh



INDUSTRY'S SHARE IN  
ELECTRICITY  
CONSUMPTION IS  
%57.8



IN 2015 4<sup>TH</sup>  
LOWEST  
PM<sub>10</sub> RATED  
CITY IN TURKEY



2014 DAILY WASTEWATER  
DISCHARGED  
PER  
CAPITA IS  
178  
LITERS



IN 2014, NUMBER OF  
TRACTORS PER  
THOUSAND HECTARES  
OF AGRICULTURAL  
LAND  
28  
OPERATED IS



CROP PRODUCTION'S  
SHARE IS  
80%  
IN AGRICULTURAL  
PRODUCTION  
VALUE IN 2015



NATURAL  
GAS  
836  
CONSUMPTION  
MILLION M<sup>3</sup>



NATURAL  
GAS CONSUMPTION  
PER  
CAPITA  
1 030 M<sup>3</sup>



5<sup>TH</sup> PROVINCE IN  
NUMBER OF  
AUTOMOBILES  
PER THOUSAND  
PEOPLE



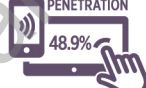
DIVIDED ROAD  
RATIO  
35.98%



MOBILE SUBSCRIPTIONS  
PER  
THOUSAND  
PEOPLE IS  
927



MOBILE INTERNET  
PENETRATION  
48.9%



2<sup>ND</sup> PROVINCE  
IN NUMBER OF CINEMA  
AND THEATRE AUDIENCE  
PER HUNDRED  
PEOPLE



NUMBER OF CINEMA  
AND THEATRE SEATS  
PER THOUSAND  
PEOPLE IS  
9



RANKS 6<sup>TH</sup> IN  
RAILWAY  
LENGTH PER  
HUNDRED KM<sup>2</sup>



ROAD  
LENGTH PER  
HUNDRED KM<sup>2</sup> IS  
6.1  
KM



FIBER CABLE  
LENGTH PER  
HUNDRED KM<sup>2</sup> IS  
34.7 KM



RANKS 6<sup>TH</sup> IN  
BROADBAND  
INTERNET  
PENETRATION



NUMBER OF VISITORS  
FOR MUSEUM AND RUINS  
PER THOUSAND PEOPLE IS  
100\*



NUMBER OF PUBLIC  
LIBRARY USERS  
PER THOUSAND  
PEOPLE IS 399



THE AVERAGE LENGTH  
OF STAY OF FOREIGN  
TOURISTS IS  
2.6 DAYS



THE AVERAGE  
LENGTH OF  
STAY IN  
TOURISTIC  
ESTABLISHMENTS IS  
1.6  
DAYS



NUMBER  
OF ACTIVE  
SPORTSPERSONS  
PER  
100 000 PEOPLE  
IS 1367



NUMBER OF  
IS 175  
SPORTS CLUBS



2014 LOCAL  
ADMINISTRATION  
ELECTION  
VOTER  
TURNOUT  
90.7%



2014 PRESIDENTIAL  
ELECTION  
VOTER  
TURNOUT  
79.9%



THE OCCUPANCY  
RATE OF TOURISM  
OPERATION  
LICENSED  
ESTABLISHMENTS  
IS 33.8%



THE AVERAGE LENGTH  
OF STAY OF  
LOCAL TOURISTS IS  
1.6 DAYS



5 838 AMATEUR  
SOCCER  
PLAYERS  
IN 2014



ACTIVE SPORTSMEN  
SHARE IN  
TOTAL IS  
19%



2015 VOTER TURNOUT  
OF GENERAL  
ELECTIONS OF  
DEPUTY 88.1%



RATE OF  
MEMBERSHIP TO  
POLITICAL  
PARTIES  
18.1%

